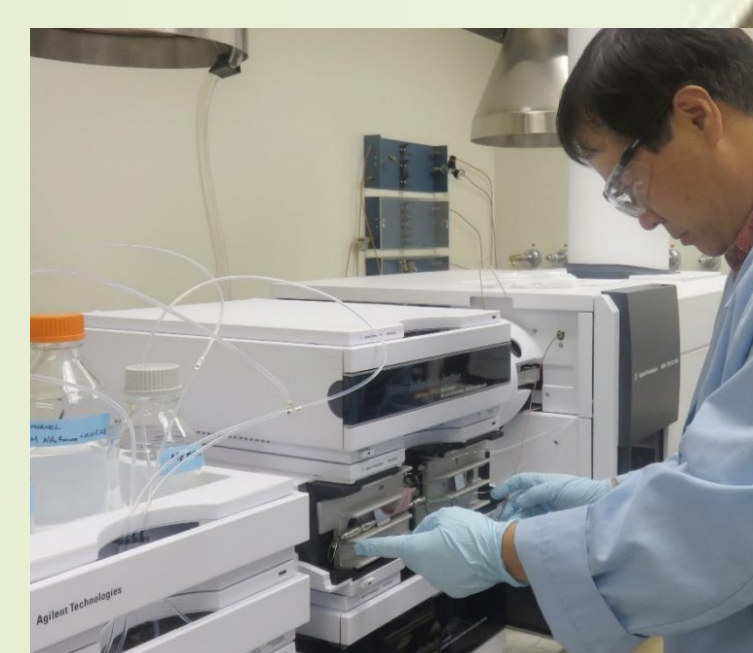


State Laboratories Division: Staying Ahead of Threats 1995 - 2005

Installed Hilo monitoring station for ambient air pollutants



Established Ion Chromatography testing for Drinking Water contaminants



August 1995: State Laboratories Division (SLD) moved to Waimano Ridge

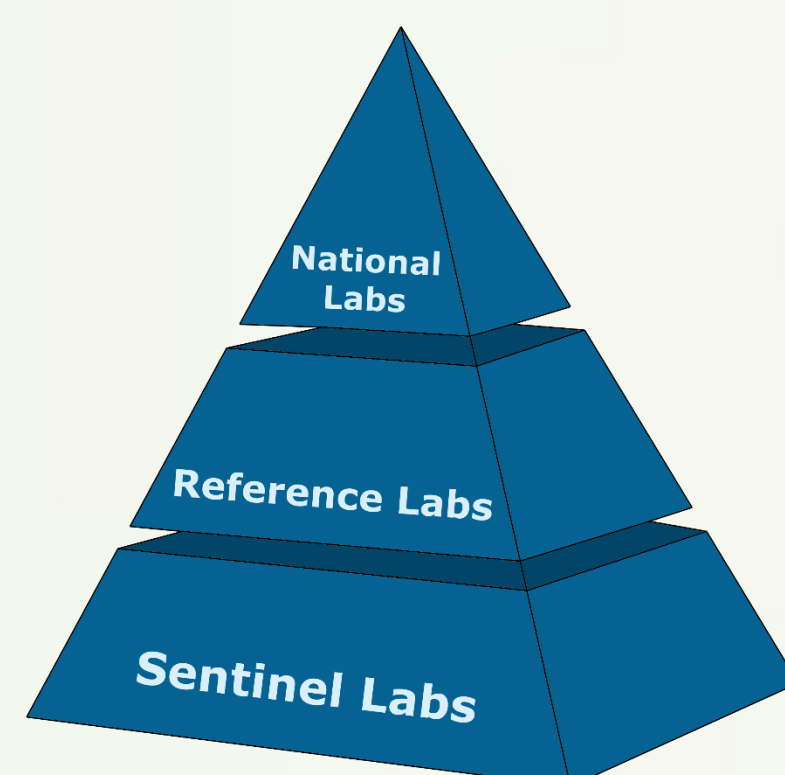
Installed Puna E monitoring station for ambient air pollutants



Polychlorinated Biphenyls (PCBs) detected in Kauai drinking water



Installed Kona monitoring station for ambient air pollutants



SLD Biological Response Lab established



Hawaii LRN launched with informational meetings and training



Automated Solid Phase Extraction concentration of organic compounds in drinking water

Micro-extraction technique for herbicides in drinking water

Air Lab begins near real-time display of air monitoring data on website

Installed University monitoring station for ambient air pollutants



Bioterrorism testing expanded; mutual support with Tripler

Norovirus PCR testing established

Approved by CDC as a Select Agent entity

Response to UH Manoa flood includes SLD *Leptospira* testing

Conducted statewide SARS table top exercise at Capitol

Trends in Ciprofloxacin resistant *Neisseria gonorrhoea* reported



Joined the Food Emergency Response Network (FERN)

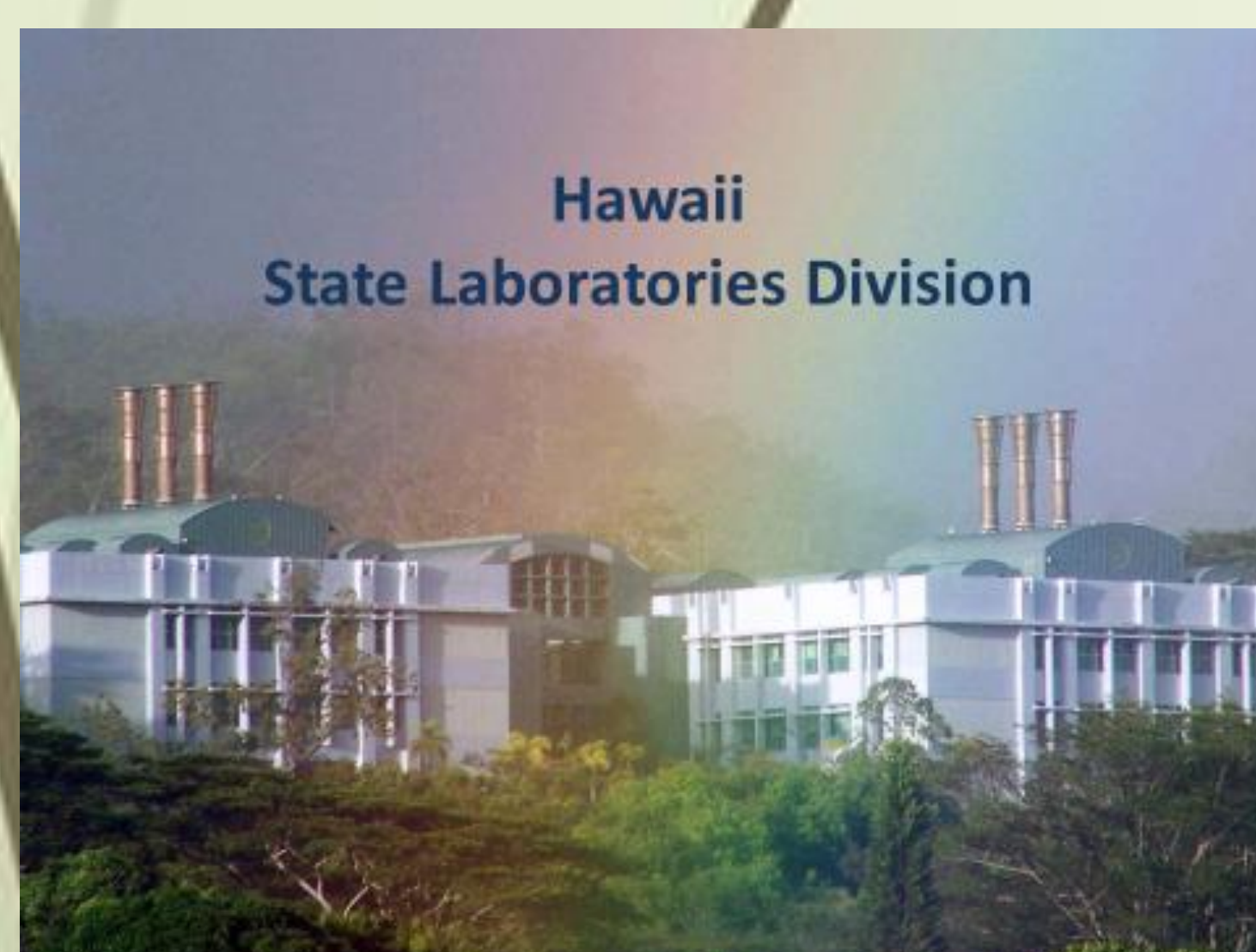


SLD celebrates 10 years on Waimano Ridge

Copper sulfate dumping investigation at Kapakahi Stream and Kapakahi Loi



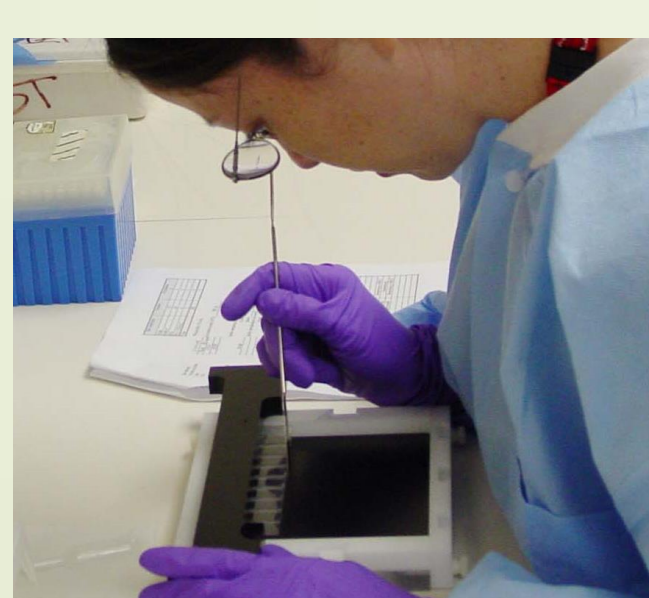
1995 1996 1997 1998 1999 2000 2001 2002 2003 2004 2005



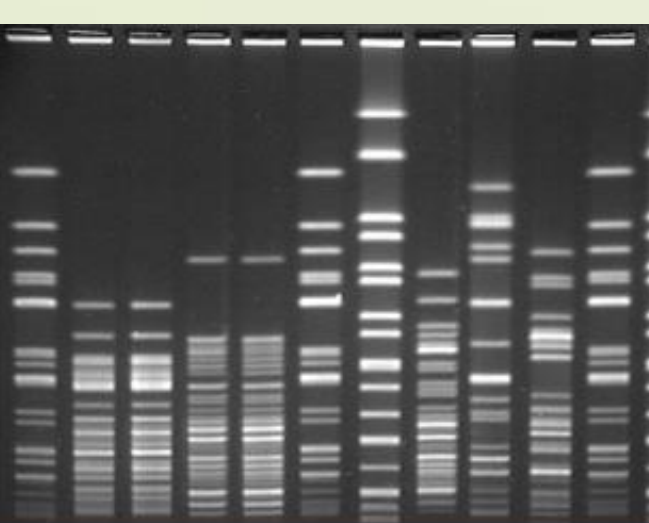
Fluochrome staining for *Mycobacterium tuberculosis* established

DNA Fingerprinting for bacteria established

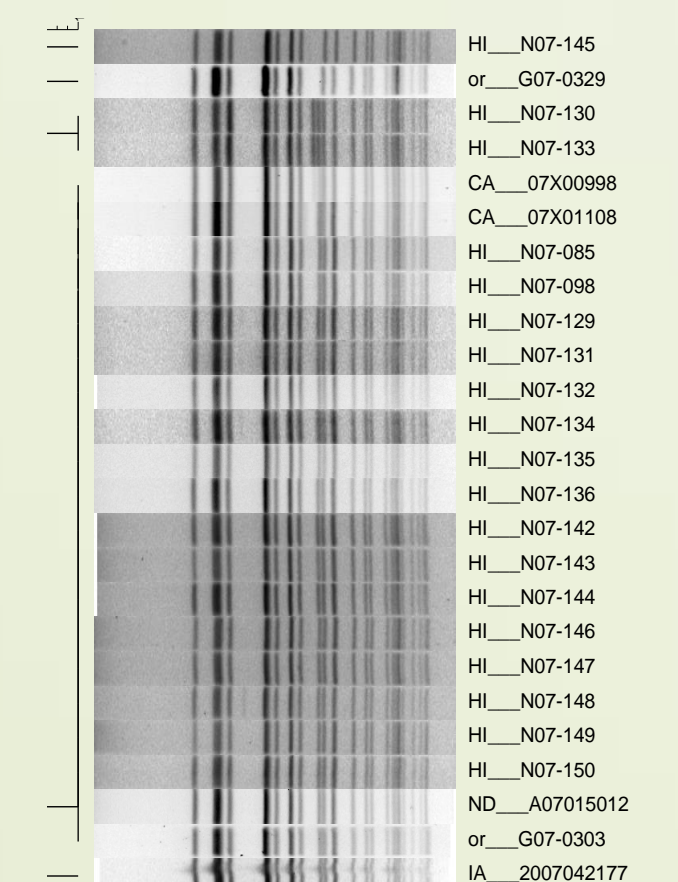
Detection of low-level Chlordane and Dieldrin pesticide in drinking water



DNA Fingerprinting detected clusters of Group A *Streptococcus*

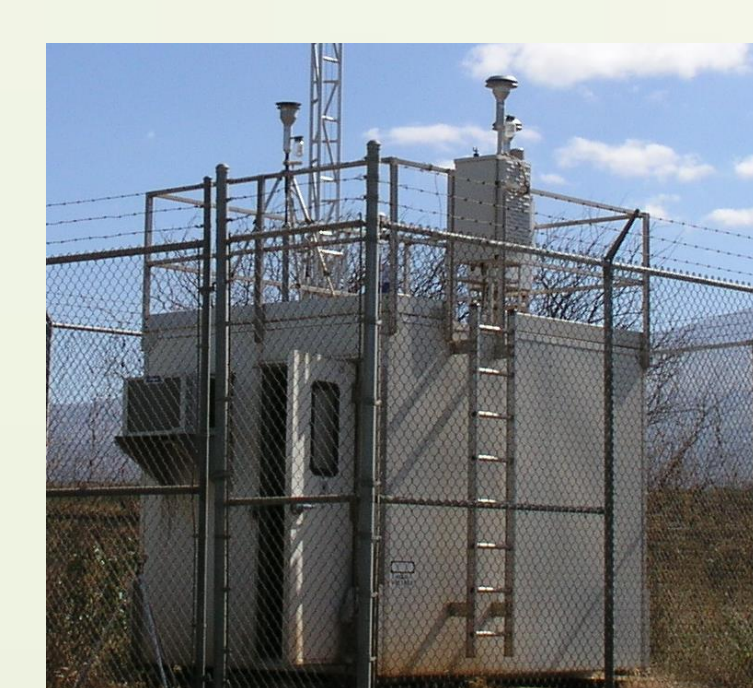


Mercury in a Kauai drinking water sample linked to water pump itself



DNA Fingerprinting linked *Salmonella* Enteritidis outbreak in eggs

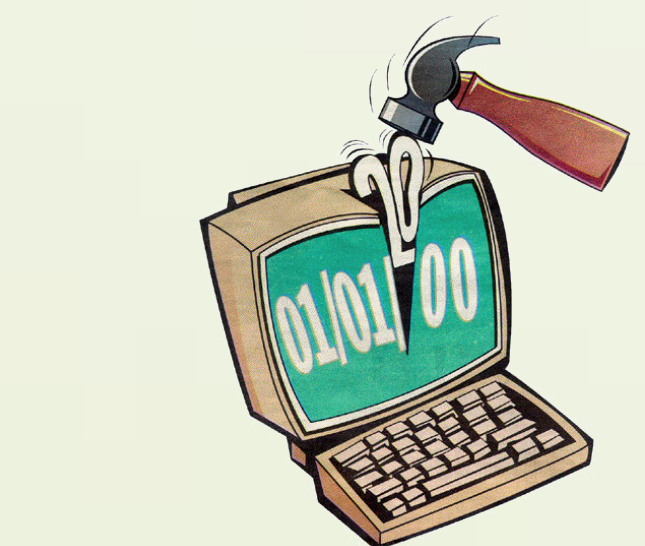
Installed Kihei monitoring station for ambient air pollutants



Heptachlor pesticide detected in cucumbers

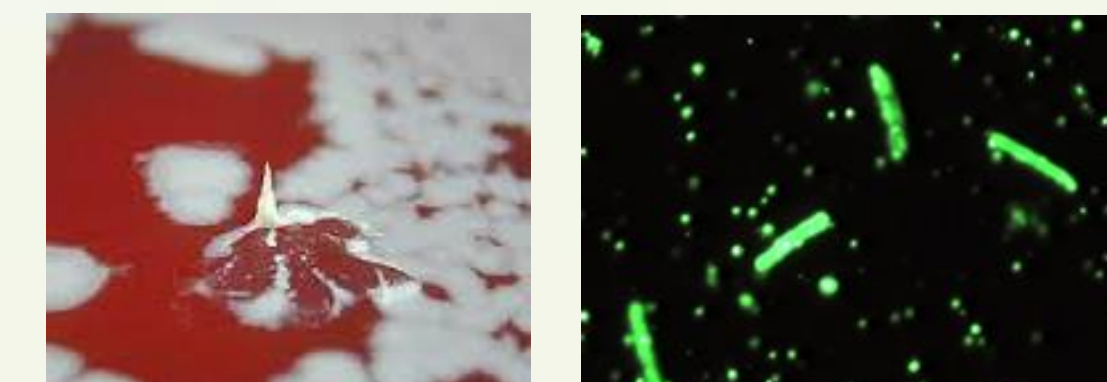


Y2K doesn't end the world



Hawaii LRN activated after East Coast anthrax attacks

Anthrax testing established



Test support for Dengue outbreak

Year	Cases
1999	1
2001	153
2002	14
2003	3
2004	6
2006	4
2007	8
2008	14
2009	6

Inductively Coupled Plasma/Mass Spectrometry established to detect heavy metals in drinking water



Began submitting near real time data to EPA AirNow which offers daily Air Quality Index (AQI) conditions

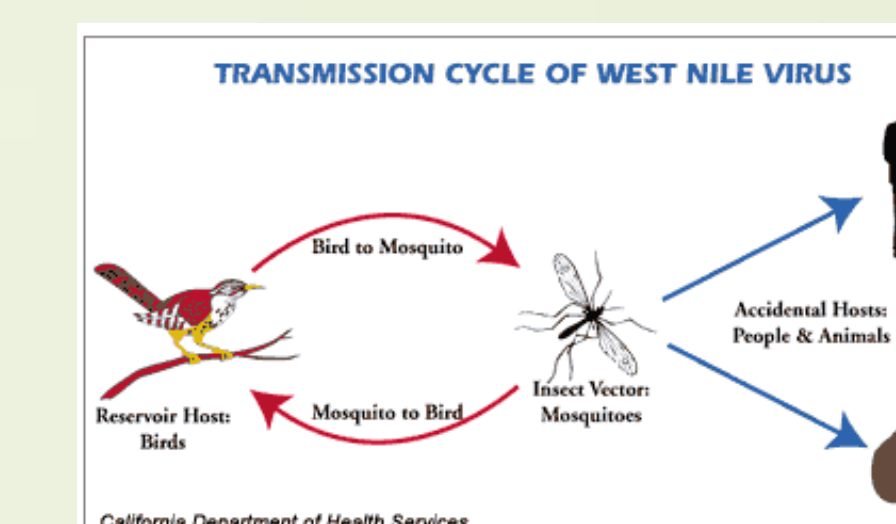


Installed Puna H monitoring station for ambient air pollutants

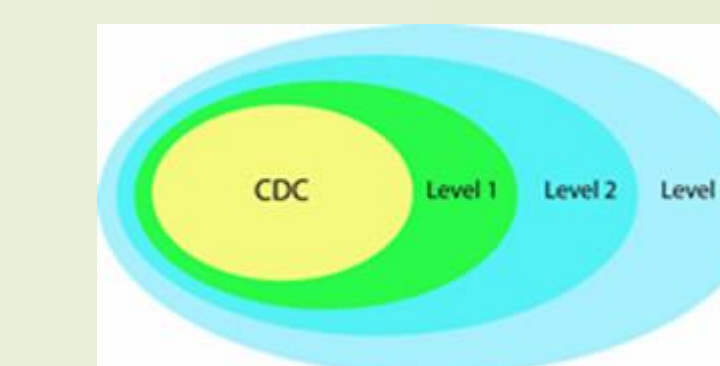


SARS testing established in response to June outbreak

West Nile virus testing established



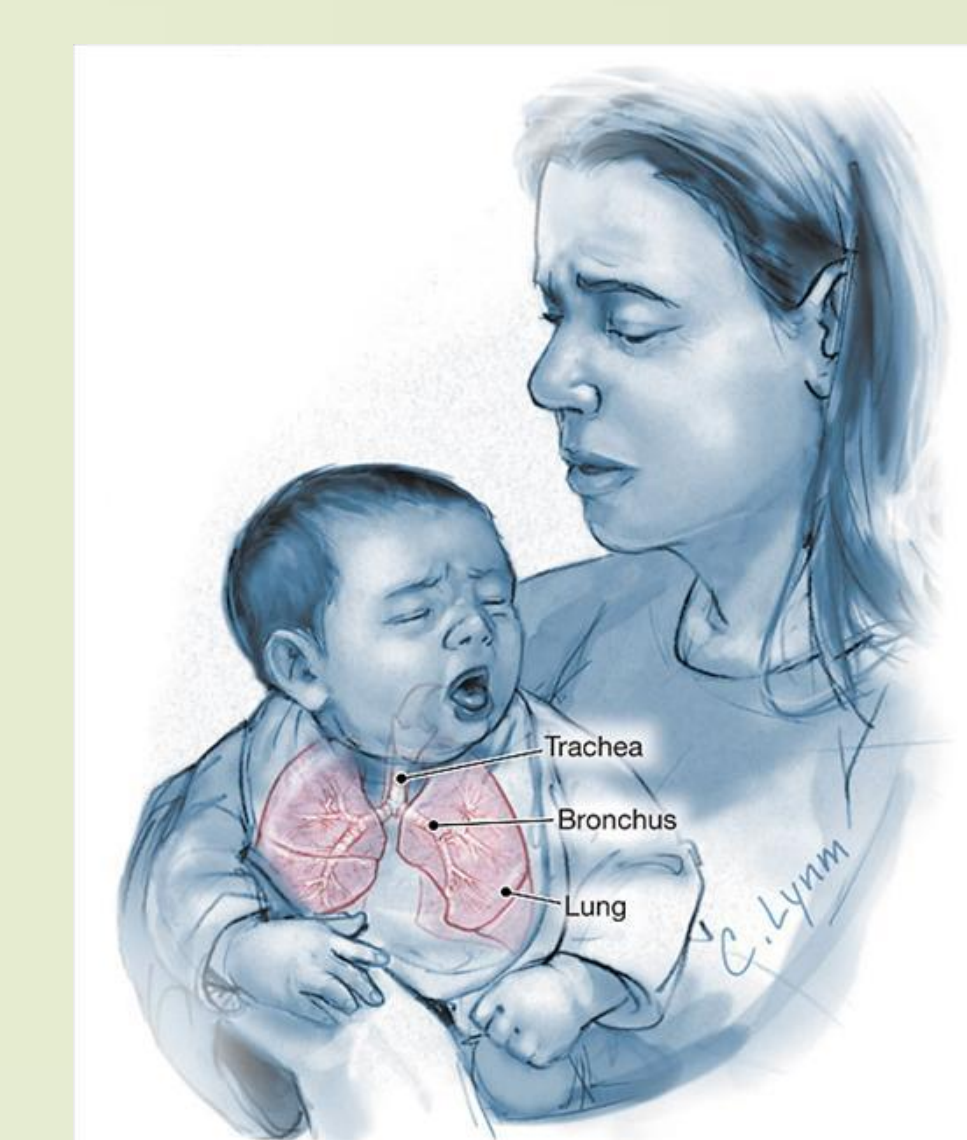
LRN-Chemical Level 2 Laboratory established



Support to Keaau, Big Island Arsenic Exposure Project

Arsenic in Urine, Kea'au Exposure Investigation

Whooping cough (pertussis) outbreak support



Initial FERN Food Safety Inspections Service Cooperative Agreement