

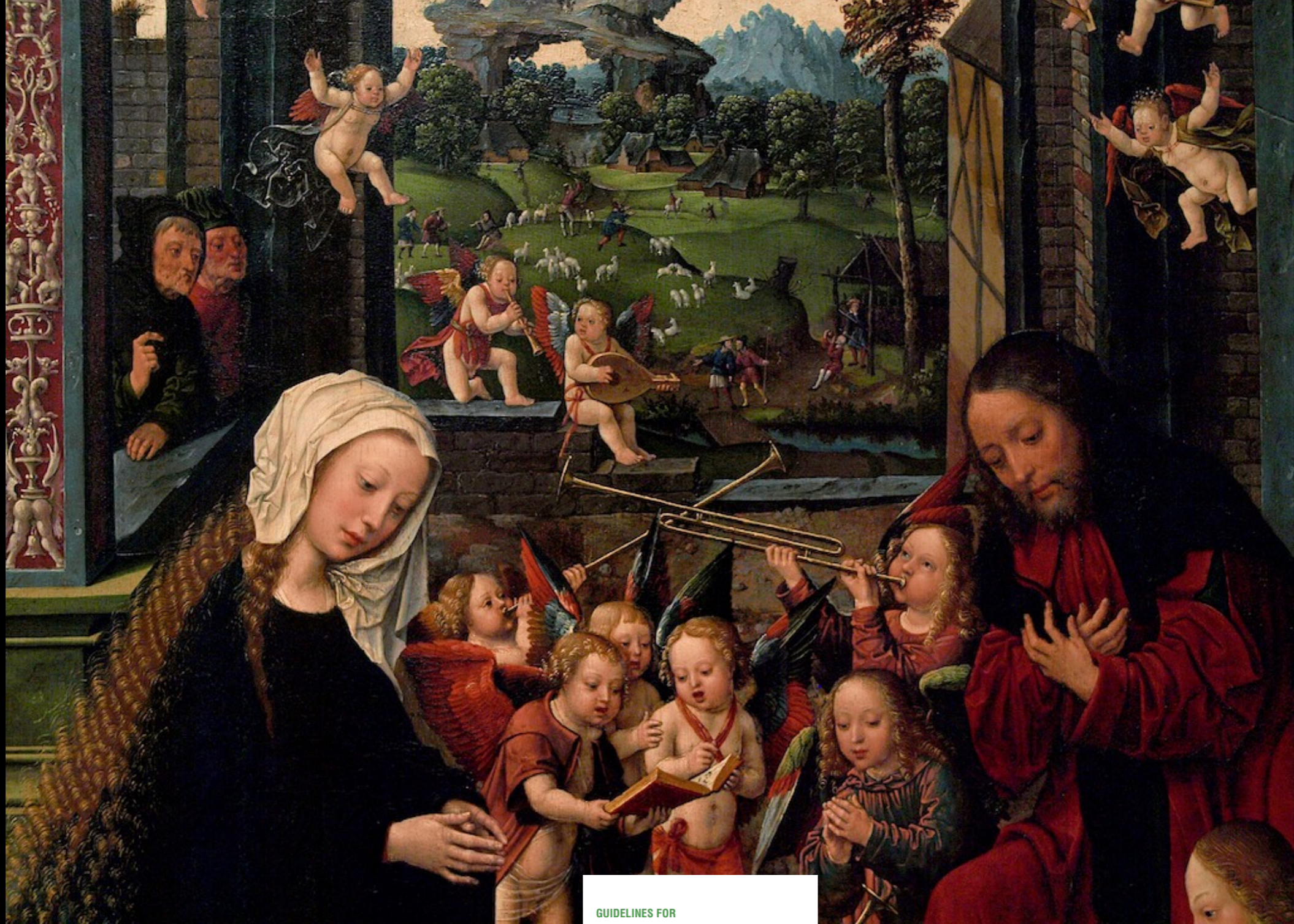
CIFOR

CIFOR Member Organizations

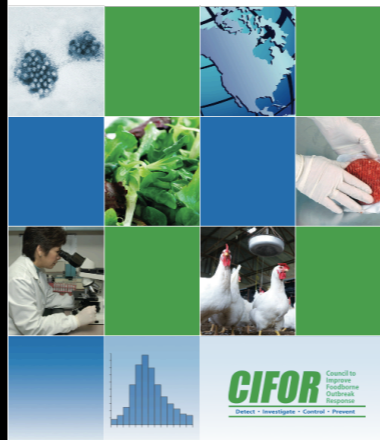
- CSTE
- APHL
- NEHA
- CDC
- FDA
- USDA
- AFDO
- NACCHO
- NEHA
- NASDA
- ASTHO



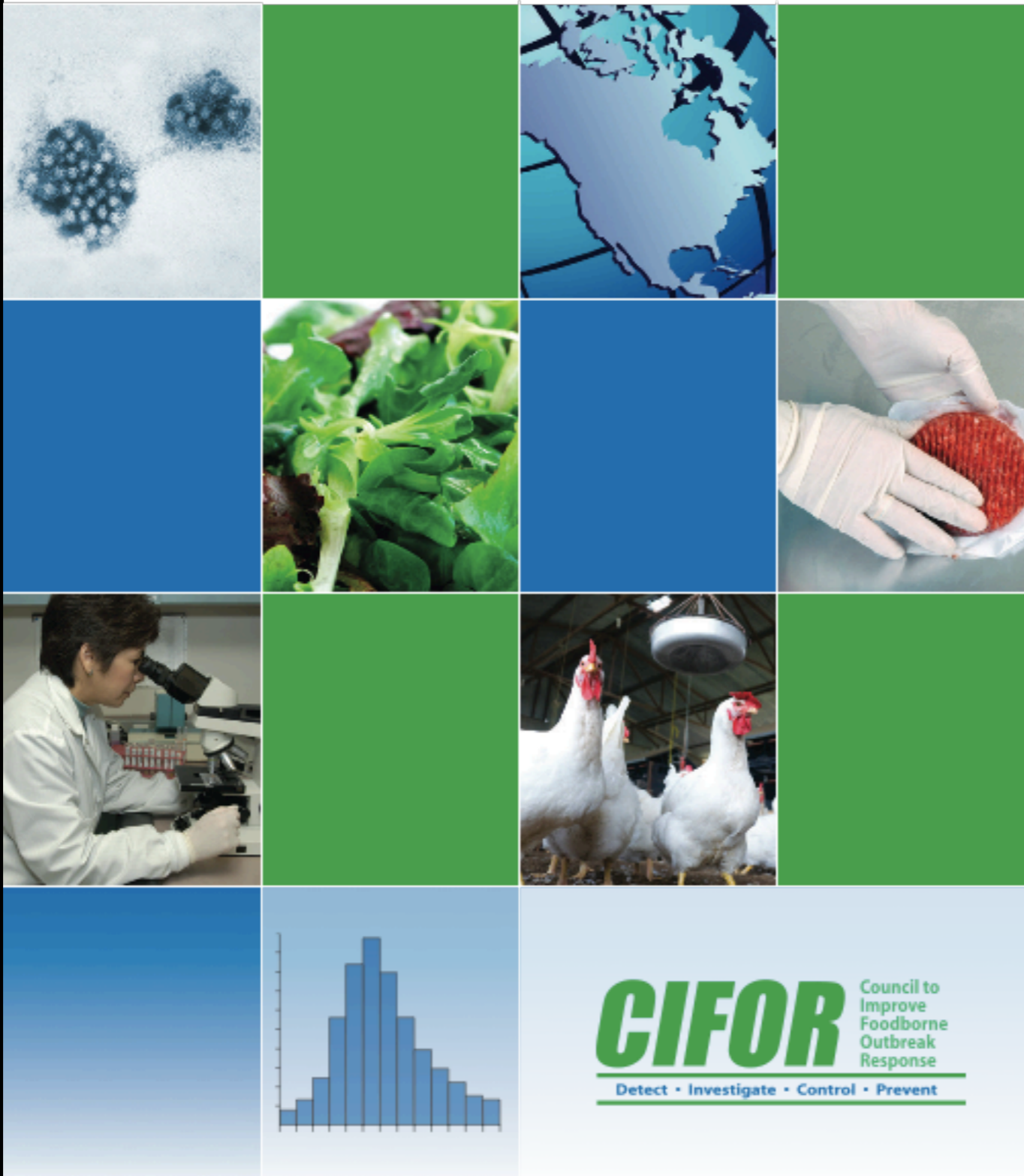




GUIDELINES FOR
FOODBORNE DISEASE OUTBREAK RESPONSE



GUIDELINES FOR FOODBORNE DISEASE OUTBREAK RESPONSE



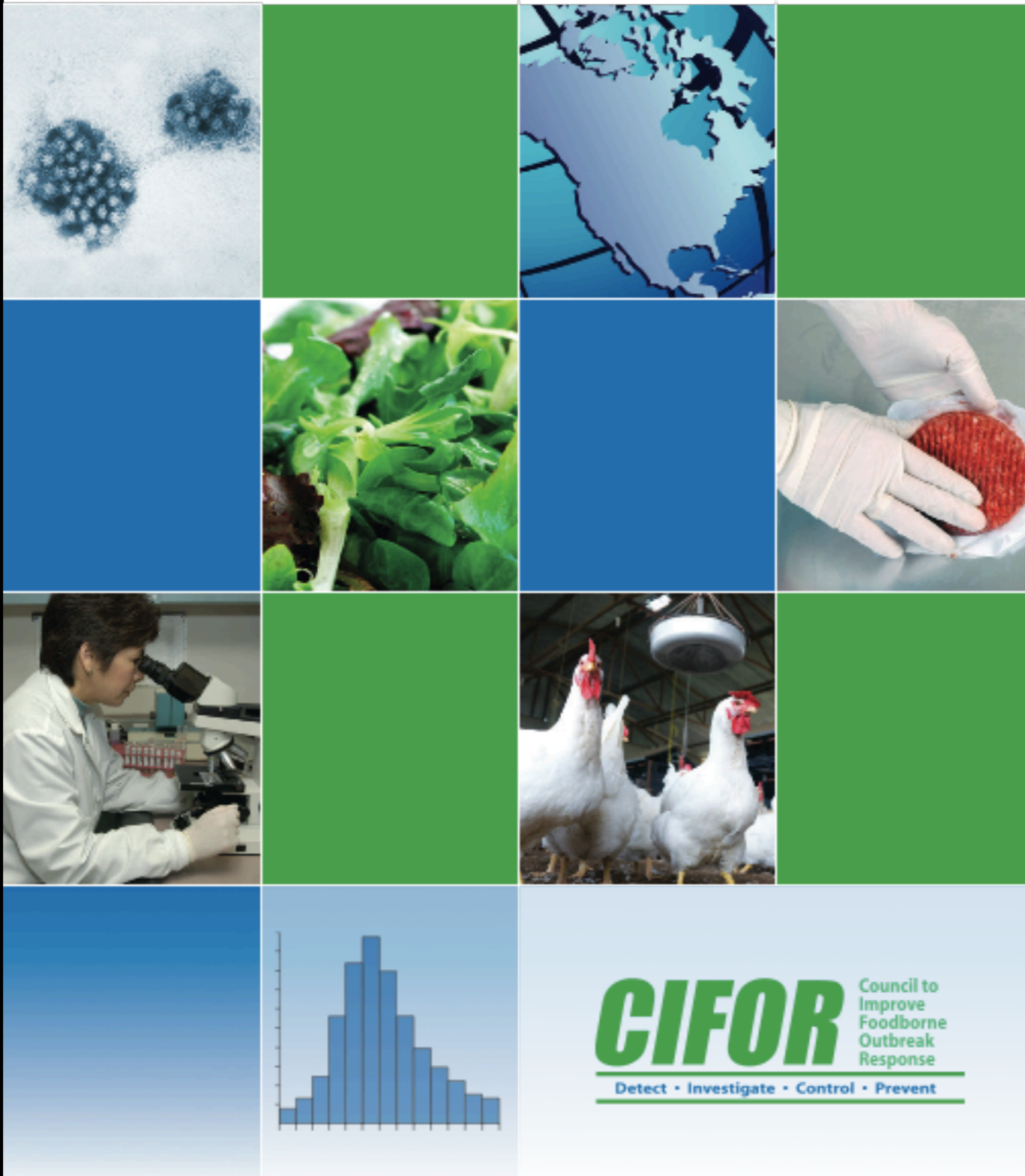
Published
July 2009



Current CIFOR Projects

- Outbreak-related law review
- Cost-benefit analysis of “PulseNet” (aka outbreak identification, investigation, and control)
- Integrated lab-epi reporting model software
- Evaluation of *Guidelines* and Toolkit
- Turning indicators into performance metrics
- Foodborne disease guidelines for food service managers

GUIDELINES FOR FOODBORNE DISEASE OUTBREAK RESPONSE



Toolkit

Using the Toolkit

- Facilitated group therapy session
- Can cover some or all of the *Guidelines*
- Interdisciplinary state or local audiences

Program Areas

- Planning and preparation

 - relationships*

 - resources*

 - communications*

- Surveillance and outbreak detection

 - complaint systems*

 - pathogen-specific surveillance*

- Investigation of clusters and outbreaks

 - epi, lab, and EH methods and procedures*

- Control measures

 - control at an implicated facility*

 - food recalls*

 - control of secondary spread*

General Procedures

- Review current programs and procedures
- Identify problem areas
- Set priorities
- Make plans to address high priority items