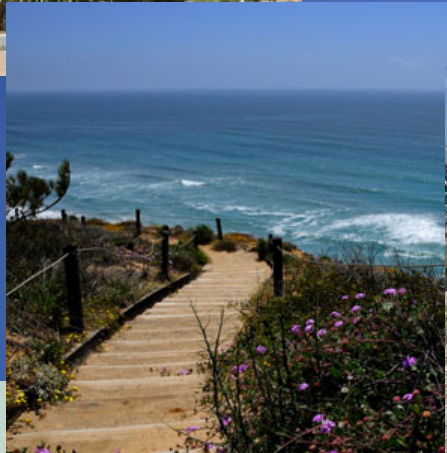




San Diego Zoo



Gaslamp



Torrey Pines State Park



La Jolla Cove

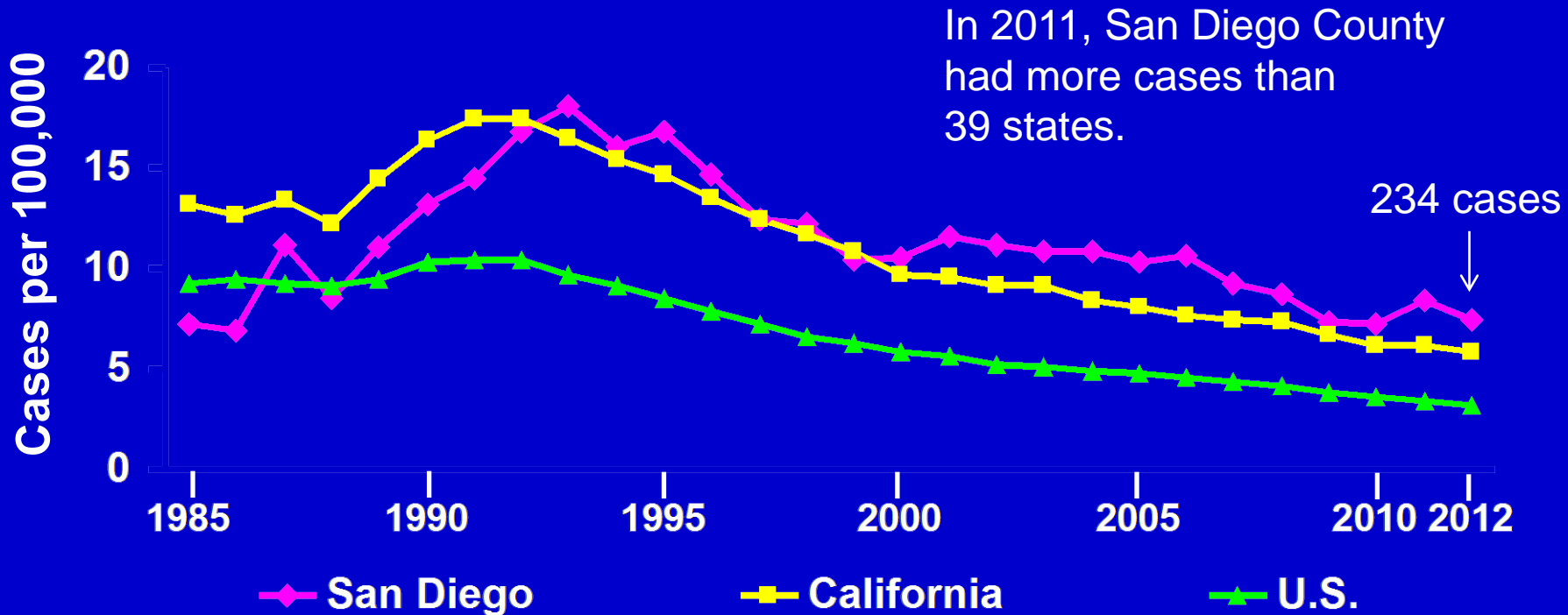


Hotel del Coronado



Mission Beach

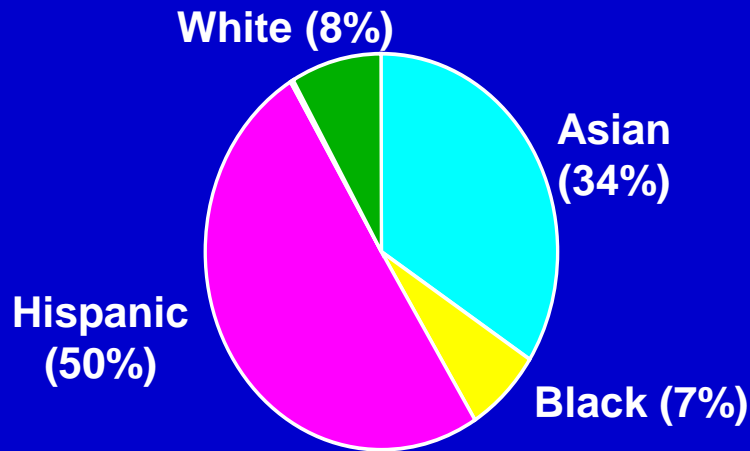
TB Case Rates* in San Diego County, California, and the U.S., 1985-2012



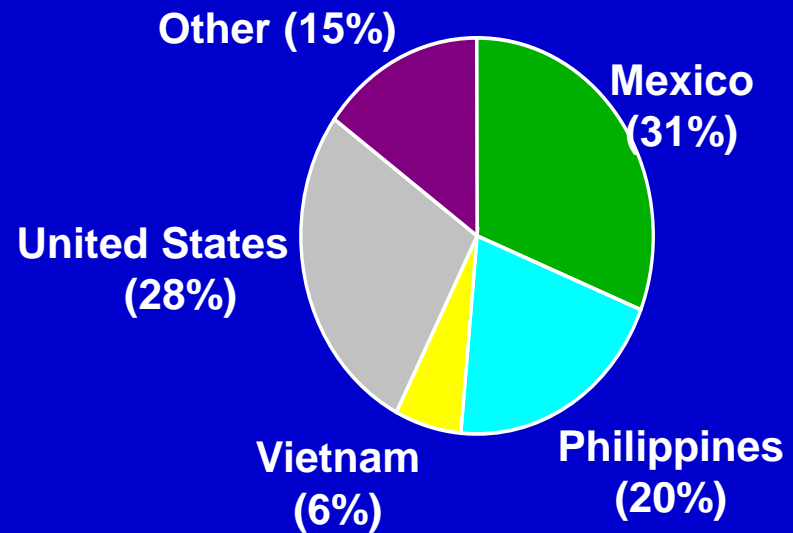
*Cases per 100,000.

Reported TB Cases San Diego County, 2007-2011

Race/Ethnicity



Country of Birth

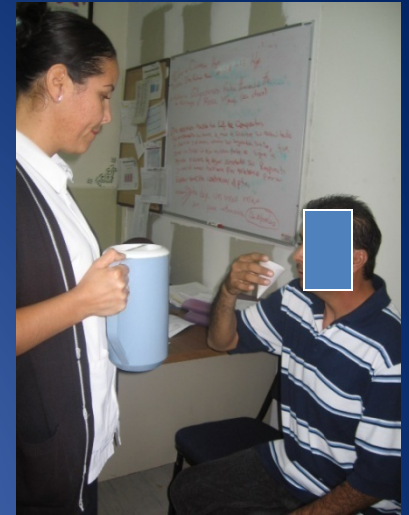
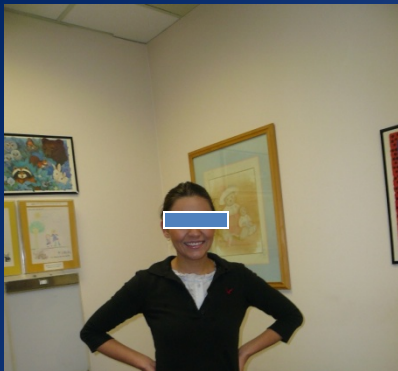


Reported TB Cases San Diego County, 2007-2011

INH resistance 11%

MDR TB 1%

M. bovis 9%



2.8% MDR, 1600 total reported cases



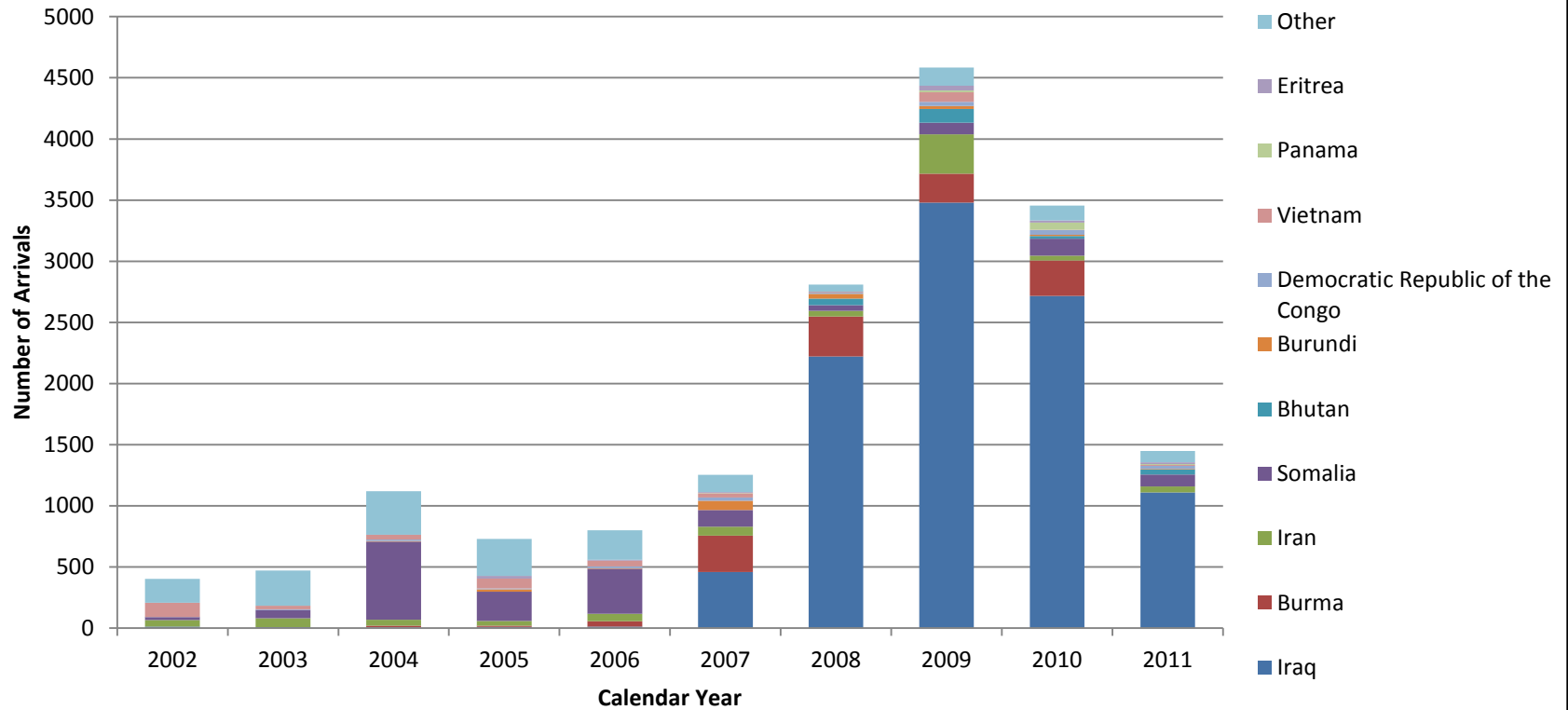
Puentes de Esperanza Outcomes: 2006-2012

	2006	2007	2008	2009	2010	2011	Total
Enrolled	1	10	6	11	14	2	44
Cured	1 (100%)	9 (90%)	6 (100%)	9 (82%)	11 (79%)	1	39 (91%)
Failed							
Abandoned				1 (4%)			1 (2%)
Died		1 (10%)		1 (4%)	1 (7%)		3 (7%)
Continues on Treatment						1	1

New US entrants tested by San Diego TB/Refugee Branch on arrival

- In 2011 San Diego County received:
 - 370 immigrant/refugee children (aged 2-14) identified as LTBI overseas via TST. 14% of CA total
 - 2,100 refugees/asylees/parolees who were tested with QFT. 42% of CA total

Refugee Arrivals to San Diego County by Country of Birth, 2002-2011



Top 10 countries of birth for refugee arrivals 2007 - 2011

Other includes Afghanistan, Albania, Azerbaijan, Bosnia and Herzegovina, Cambodia, Central African Republic, Chad, China, Columbia, Congo, Cote D'Ivoire, Croatia, Cuba, Egypt, Equatorial Guinea, Ethiopia, Gabon, Georgia, Jordan, Kazakhstan, Kenya, Kyrgyzstan, Laos, Latvia, Lebanon, Liberia, Mauritania, Moldova, Morocco, Nigeria, Philippines, Russia, Rwanda, Serbia, Sierra Leone, Sri Lanka, Sudan, Syria, Togo, Uganda, Ukraine, Uzbekistan

Source: California Department of Social Services, Refugee Programs Bureau

QFT-GIT results in B2 immigrant children, 2010-2012

Mexico

Age at entry	<0.35IU	0.35-1.0	>1.0	Total "positive"
2-4 (21)	85.7%	4.8%	9.5%	14.3%
5-9 (91)	29.7%	4.4%	65.9%	70.3%
10-15 (199)	16.6%	6.0%	77.4%	83.4%

311 TST+
vs 233 QFT+

Philippines

Age at entry	<0.35IU	0.35-1.0	>1.0	Total "positive"
2-4 (51)	82.4%	3.9%	13.7%	17.6%
5-9 (123)	89.4%	6.5%	4.1%	10.6%
10-15 (191)	84.1%	7.9%	11.0%	17.9%

365 TST+
vs 58 QFT+

Vietnam

Age at entry	<0.35IU	>1.0	Total "positive"
2-4 (2)	100.0%	0%	0%
5-9 (14)	85.7%	14.3%	14.3%
10-15 (20)	90%	10%	10%

36 TST+ vs
4 QFT+

The laboratory is an integral part of everything we do in TB control... and innovation is exploding...

- Larry Samons
- Let Negado
- Graciela Zuniga
- Anna Liza Manlutac
- Kris Pinto
- Paul Temprendola
- Gerry Washabaugh
- Ana Orozco
- Berneta McCaskill
- Florencia Manuel
- Grace Lin
- Ed Desmond
- Sonia Montiel
- Abby Duque
- Martin Clinis
- Bev Metchock
- ...etc.



Laboratory advances in TB diagnostics are changing quickly...

Student: “Dr. Einstein, aren’t these the same questions as last year’s final exam?”

Dr. Einstein: “Yes, but this year the answers are different”