

2015 APHL[™] ANNUAL MEETING

and ninth government environmental laboratory conference

The First Diagnosed Case of Ebola in the US

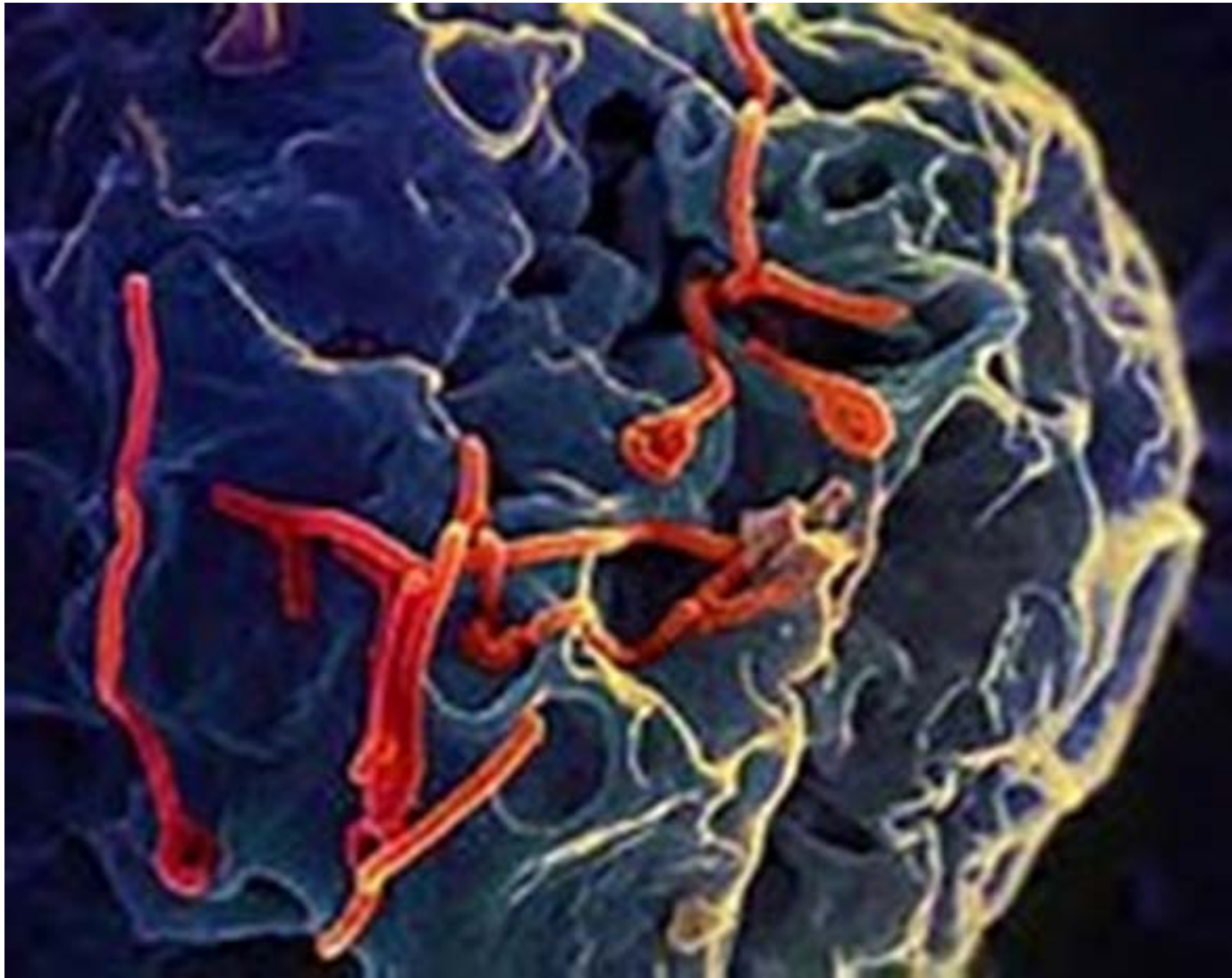
Grace Kubin, PhD

Texas Department of State Health Services

APHL Annual Meeting

May 18, 2015





Ebola only a plane ride away from USA

USA Today, July 28th

Ebola Related Activity

August 1st

From: Health Alert Network (CDC) [<mailto:healthalert@cdc.gov>]

Sent: Friday, August 01, 2014 9:39 PM

To: Health Alert Network (CDC)

Cc: Health Alert Network (CDC)

Subject: HAN 364: Guidelines for Evaluation of US Patients Suspected of Having Ebola Virus Disease

This is an official
CDC HEALTH ADVISORY

Distributed via the CDC Health Alert Network
August 1, 2014 20:00 ET (8:00 PM ET)
CDCHAN-00364

**Guidelines for Evaluation of US Patients Suspected
of Having Ebola Virus Disease**

More Ebola Related Activity

August 5th

DoD granted an EUA for their Ebola Zaire (EZ1 rRT-PCR) test



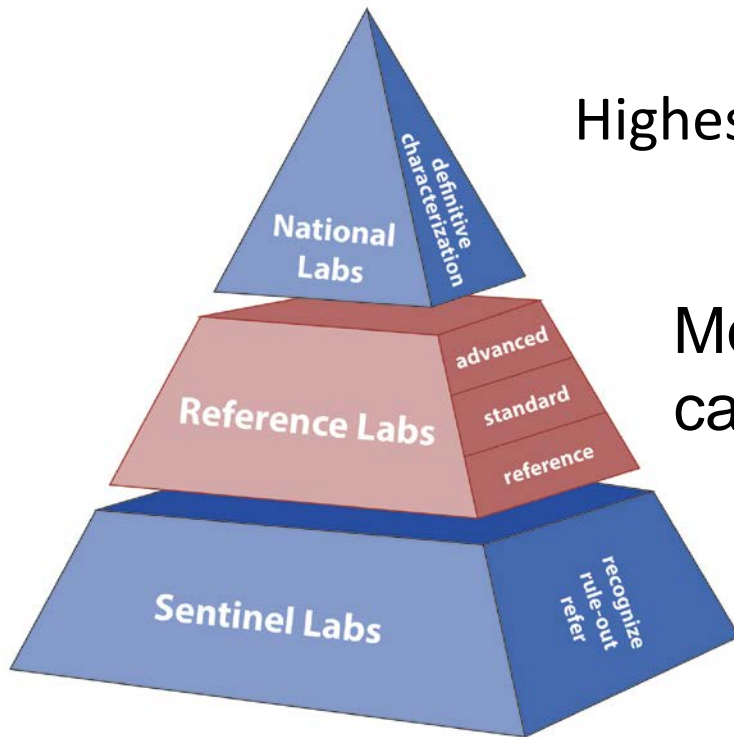
More Ebola Related Activity

August 6th

CDC LRN would make the DoD Ebola PCR test available to a few of their labs.



CDC Laboratory Response Network (LRN)



Highest level characterization (Federal)

Molecular assays, reference capacity, confirmation, and transport

Rule-out and forward organisms

Getting Ready for Ebola

- Communication and coordination both internal and external to the laboratory
- Performed laboratory risk assessment for testing of Ebola specimens

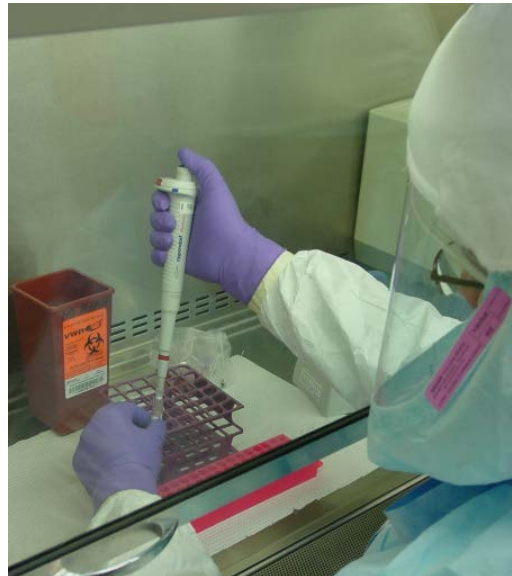


Training, Training, Training



The First Real Sample

- Specimens arrived at DSHS and CDC via commercial carrier at about the same time
- Test results for the DSHS test and the CDC test were ready almost at the same time
- **AND THE RESULTS MATCHED!**



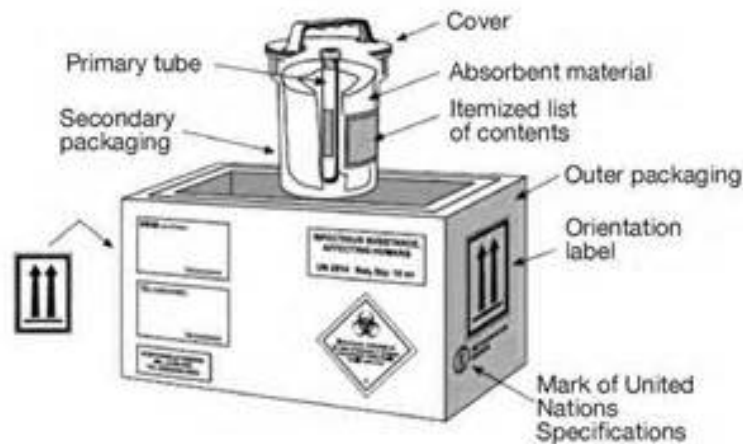
More Testing

- Subsequent specimens arrived at unusual hours requiring 24 hour operations
- Developed a mini surge plan to help with specimens arriving at all times
- Two more specimens would arrive at DSHS that would be the first and second cases of Ebola Zaire acquired in the US



Packaging & Shipping

- Ebola suspect specimens had to be packaged as an infectious substance affecting humans
 - Category A – UN 2814
 - Shipped cold (4 C)
- Some commercial carriers would not ship Ebola suspect specimens



Coordination Was Key

- Coordination with CDC
- Planning with our epidemiologists and development of an algorithm for test requests
- Using the network Texas LRN laboratories

